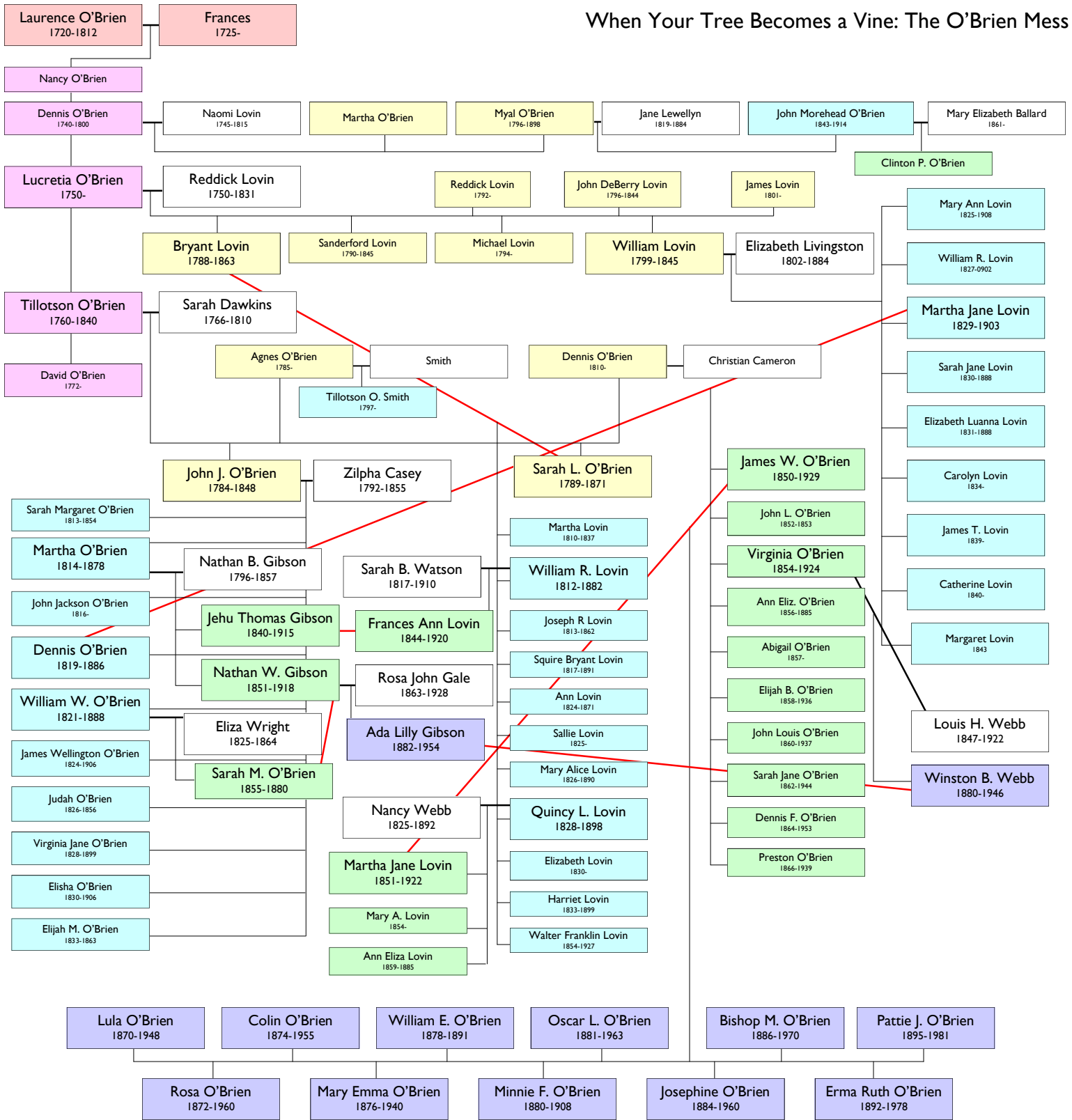


When Your Tree Becomes a Vine: The O'Brien Mess



Notes:

- Each of the six generations shown is a different color (orange, pink, yellow, blue, green, purple).
- Smaller type for the names indicates no marriage, and/or no children, and/or they didn't marry a relation. (To save space, descendants of those people are not shown past the second pink generation.)
- Spouses are indicated with white, unless it's a relation.
- Bryant Lovin and Sarah Louise O'Brien are first cousins, as are Sarah Margaret O'Brien and Nathan Warren Gibson.
- Couples who are second cousins to each other: Dennis O'Brien & Martha Jane Lovin, James William O'Brien & Martha Jane Lovin, Jehu Thomas Gibson & Frances Ann Lovin, Winston Bascom Webb & Ada Lilly Gibson.